

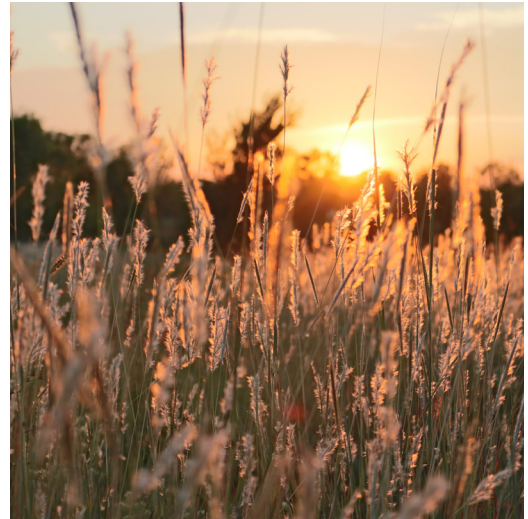
Ducks Unlimited

Apex Clean Energy awarded a \$198,000 conservation grant on behalf of Jayhawk Wind to Ducks Unlimited for the acquisition and restoration of the Moden Tract (Moden), a 190-acre plot of land in Cherokee County, Kansas.

About the Moden Acquisition

Moden contains 157 acres of grassland, 28 acres of wetland, and five acres of woodland. In April 2023, Ducks Unlimited purchased Moden to restore vital habitat for wildlife while increasing public access and expanding adjacent public recreation areas. The Moden restoration project will also:

- support 16 threatened and endangered species, including grey, Indiana, northern long-eared, Ozark big-eared, and tricolored bats
- enable future fencing for grazing management
- create waterfowl habitat through strategic vegetation disturbance to promote healthy uplands and wetlands with desirable habitat for invertebrates and annuals



Ducks Unlimited leveraged Apex's donation at a 3:1 match—and these funds will be leveraged for another \$1 million+ from a North American Wetlands Conservation Act grant for further conservation work in southeastern Kansas.

Ducks Unlimited intends to hold the Moden land for two to three years before transferring it to the Kansas Department of Wildlife & Parks (KDWP) for long-term ownership and management. Once transferred, Moden will be added to the adjacent 690-acre parcel owned and managed by KDWP.

About the Apex Conservation Grant Program

As a company with a core value of sustainability, Apex Clean Energy endeavors to not only minimize our projects' impacts, but also promote an ecological balance. Through the Apex Conservation Grant Program, each renewable energy project commercialized by Apex will contribute a sum of money, proportional to the size of the project, to support local or regional wildlife conservation, reforestation and flora restoration, protection of sensitive habitats such as grassland or wetlands, and other environmental conservation initiatives in or near project communities.